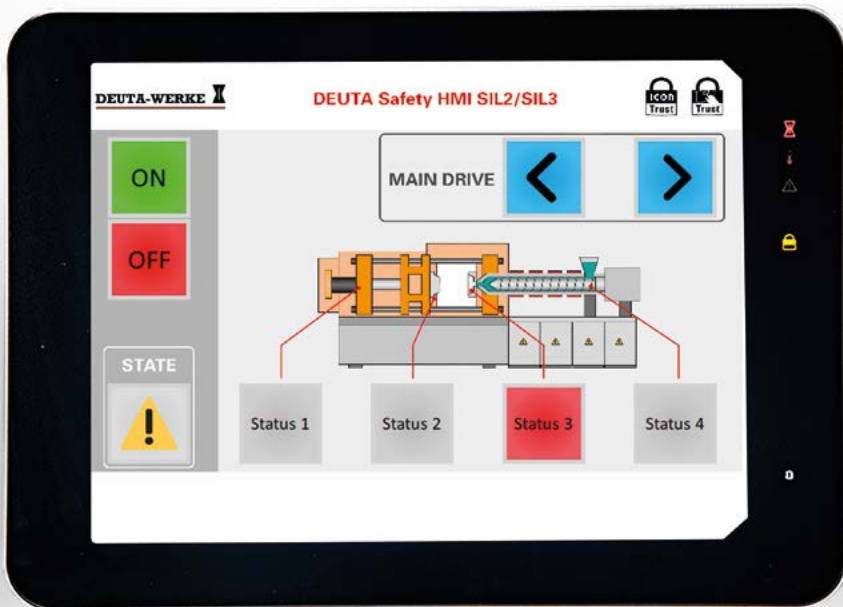


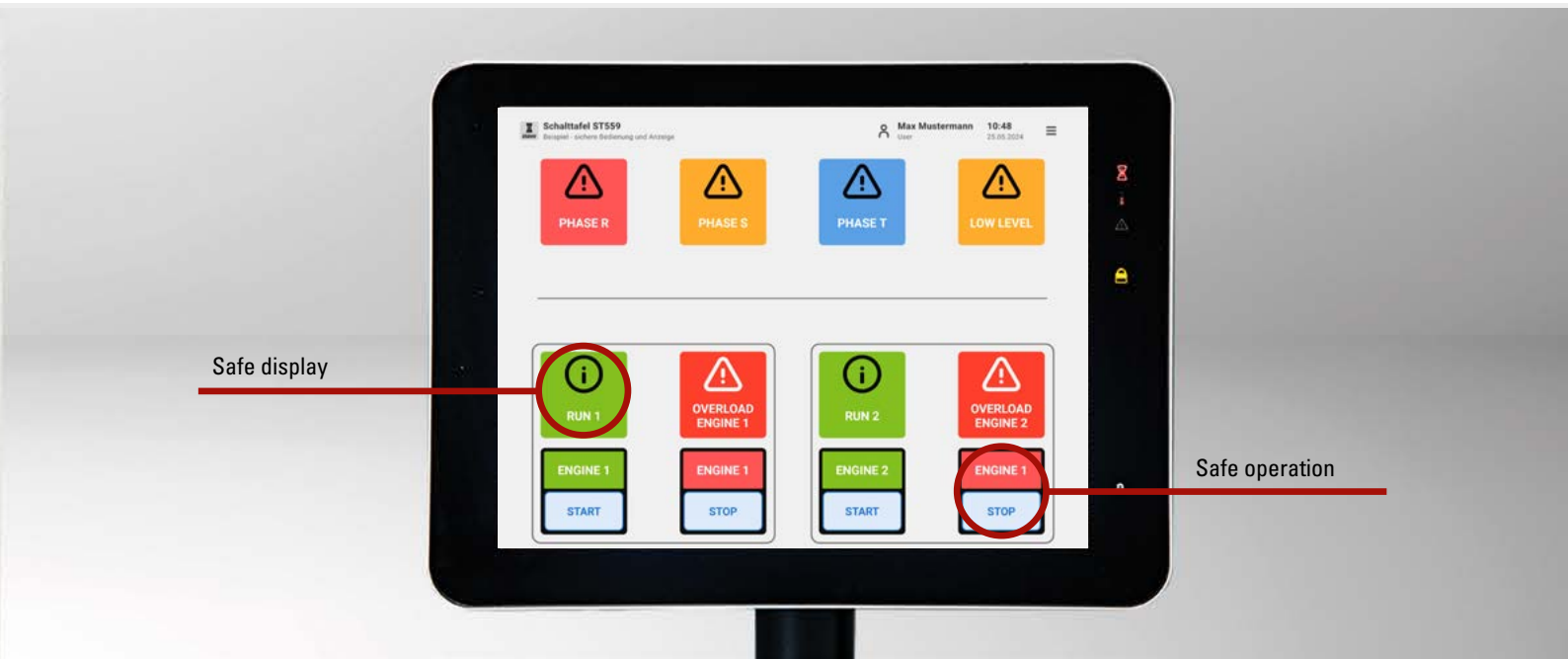
# D-SelectTrust Panel

## Simply safe HMIs



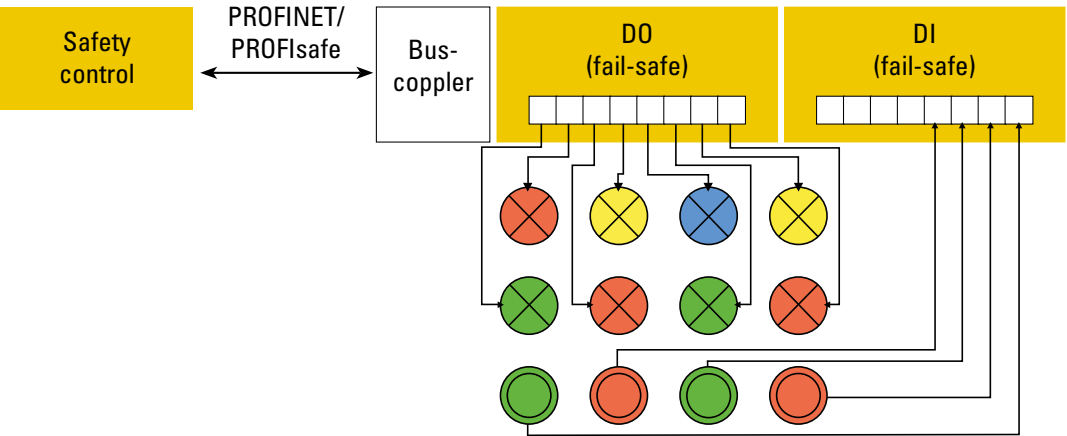
Flexible.  
Safe up to SIL3.





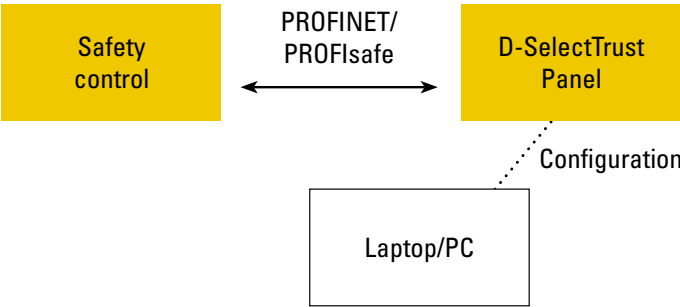
## »Switchboards - Safe - but static & rigid«

**State of the art for safe operation and display**  
Switchboards provide the required safety level for functionally safe display and input for safety controllers – at the expense of time and flexibility in all project phases: It is only possible to revise fundamental decisions made during initial project planning later and at great expense. Even simple changes and additions require a maintenance window. And during operation, the buttons must be checked regularly.



## »D-SelectTrust Panel - Innovation for functionally safe and flexible HMIs«


**Digital, flexible and safe switchboards – up to SIL3**  
D-SelectTrust Panel is an HMI based on a brilliant TFT screen. Indicator lights and push-buttons can be configured via a web browser in a very short time – and adapted to meet the needs of specific projects in a variety of ways. Time- and cost-intensive work steps for project changes are not necessary. The new operating units are reconfigured remotely on the HMI.



# »A safe HMI interface in 3 steps«


**1. Design**

The user positions the desired buttons on the interface. Text or graphic symbols as well as colour can be freely selected for each field.




**2. Transfer and Generate**

The data are transferred from the browser to the D-SelectTrust Panel.  
An IconTrust® configuration with an associated report is generated, which can be used for verification and documentation.



**3. Integrate**

All of the D-SelectTrust Panel fields are now connected to the safety controller via PROFIsafe. The D-SelectTrust Panel can be integrated into the safety infrastructure.



# »Certified safety«

The safe IconTrust® und SelectTrust® technology forms the safety basis for D-SelectTrust Panels. It is used in, some 20,000 HMI devices worldwide. The patented Trust functions ensure that safety-relevant display content is displayed in a functionally safe manner.

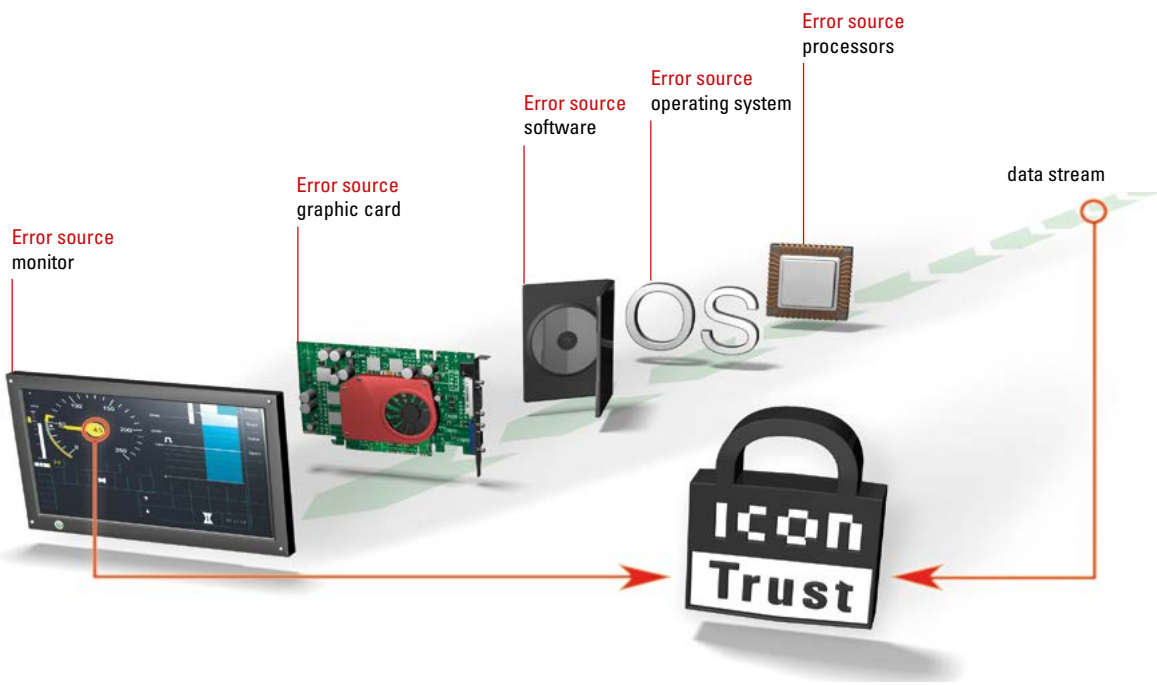
Unlike conventional procedures, the Trust technologies offer greater safety because the indicators and controls in safety-related areas of an HMI reliably represent the determined values. The user is immediately able to recognise when any deviations occur.

**The safe IconTrust® technology certified up to SIL3**

- ✓ Pursuant to EN 50126, EN 50128, EN 50129
- ✓ Pursuant to IEC 61508
- ✓ PROFIsafe

**Ongoing certification for D-SelectTrust Panel**

- ✓ IEC 61508
- ✓ ISO 13849 PLe
- ✓ IEC 62061 SIL3
- ✓ PROFINET / PROFIsafe
- ✓ IEC 62443-4-2 SL-1



»Safe configuration«

Flexible HMIs for safe applications

The D-SelectTrust Panel offers up to 20 display or input fields – comparable to lights and pushbuttons on switchboards. The fields are laid out in the form of a (configurable) grid.

For the operator, the fields are clear and easy to read and understand by means of text, icons or graphics as well as colours. A configurable background image allows the assignment of the display and input fields to system components to be intuitively understood by the operator.

For supplementary, non-safety related information (e.g. historical values, progress curves or work instructions), an optional “web view” is available, which is displayed alongside the fields. Changes to the HMI can be implemented quickly and easily in all project phases.

Integration into existing PLC systems

Integration with safety controllers is carried out as usual via a GSD file. The D-SelectTrust Panel configuration report can be used as a basis for controlling the display and input fields, as well as for integration tests.

Configuration using a web browser

The fields displayed on the HMI can be easily and flexibly edited via a web interface. This shows a live preview of the HMI configuration centered on the screen. A preview directly on the D-SelectTrust Panel is also possible at any time.

This allows all of the individual fields’ properties, together with global settings – such as field size and spacing – and grid alignment to be easily customised.

Transferring the created configuration to the device

SelectTrust Panel configurations can be downloaded locally. This facilitates the creation of a configuration library of different applications and revision levels.

The configuration files can be uploaded to the web interface or directly to a device at any time for further editing. Replication of the configuration on other D-SelectTrust Panels can be performed remotely via the network. For example, changes can be quickly transferred from one device to all other D-SelectTrust Panels in the system.

»With time and cost savings«



IconTrust® Safety

- Display and input up to SIL3 (in accordance with IEC 61508)
- Fully technically monitored
- A manual availability check is unnecessary (“lamp test”)
- Proven technology – in for over 10 years
- Long-term availability through use in railway applications



Engineering

- Via web browser, no separate software necessary
- Rapid planning and replanning without removal and installation
- Easy creation of a configuration library
- Easy duplication to further devices (redundancy, exchange)



Flexibility

- Free assignment and display of fields
- Rapid change between revision statuses or variants
- Changes can be remotely imported, no rewiring or reassembly required
- Non-SIL content can be changed at any time without affecting safety



Ergonomics

- Intuitive operation and monitoring
- Process-supported operator intervention unnecessary
- Button functions can be clarified using pictograms



Security

- IconTrust® bundles all safety measures
- Diverse and separate from visualisation and system
- Software or operating system update without affecting safety

D-SelectTrust Panel

Operation		Interfaces	
Operating mode	Complex control panels, multi-page, limit value input, parameter input & display	Ethernet	2x PROFINET with MRP, 1x Service
Use cases	Alarm panel, step chain, recipe selection, complex control panel	PROFINET	
Number of screen pages	Configurable	Conformance class	CC-B (RT)
Input/output fields	20 per screen page	MRP	yes
Field labelling & colours	Freely definable	Profile	PROFIsafe V2.4 / V2.6.1
Display		Protection category	
Display size	12.1"	Front/rear	IP42
Resolution	1024x768	Engineering software	
Touch type	capacitive	Project planning	Web interface / GSDML
Functional safety (IEC61508)		Ambient conditions	
Display	SIL3	Installation position	Landscape
Entry	SIL2	Temperature	-25°C to +55°C
		Power supply	
		Supply voltage	24V DC

# DEUTA-WERKE

Paffrather Strasse 140 | 51465 Bergisch Gladbach | Germany  
Phone +49 (0) 2202 958-100 | Fax +49 (0) 22 02 958-145  
support@deuta.de | [www.deuta.com](http://www.deuta.com) | [www.icontrust.com](http://www.icontrust.com)



DEUTA-WERKE GmbH | Paffrather Str. 140 | 51465 Bergisch Gladbach | Germany | Phone +49 (0) 2202 958-100 | Fax +49 (0) 22 02 958-145 | E-Mail: [support@deuta.de](mailto:support@deuta.de) | [www.deuta.com](http://www.deuta.com)  
Represented by the Managing Directors: Mr. Dr. Rudolf Ganz and Mr. Thomas Blau | Register court: Amtsgericht Köln, Register number: HRB Köln 67 107 | Value added tax identification number: DE 265417448 | Pictures and articles including any other contents printed in the brochure are proprietary. The reprint, copy, distribution as well as any other actions violating the copyright are subject to prior written authorization by DEUTA-WERKE GmbH.

The information contained in this brochure are of general information purposes only representing examples of our standard products. The information contained in the brochure does not constitute any guarantee for technical data or features. DEUTA-WERKE GmbH checked the information carefully, however, it assumes no liability for the timeliness, correctness and completeness or quality of the provided information. Required special features are subject to separate individual agreement on the purchase of a product. Only variations of the pictured standard products agreed on the purchase are decisive.

The state of products pictured and described in this brochure corresponds with that on the final editing, however, DEUTA-WERKE GmbH reserves the right to make changes in the meantime. The names DEUTA REDBOX®, IconTrust®, SelectTrust®, SignalTrust®, MouseTrust®, D-SmartView®, D-EcoView®, D-PowerView® and DEUTA RedCloud® are registered trademarks of DEUTA-WERKE GmbH. IconTrust® and SelectTrust® are patented inventions owned by DEUTA-WERKE GmbH. Without prior written consent of DEUTA-WERKE GmbH the use of trademarks and patents is not allowed.