

DEUTA Sensors

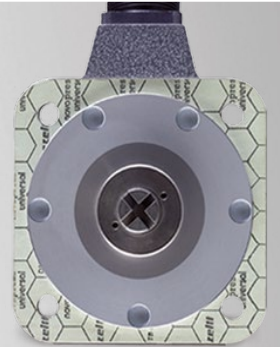
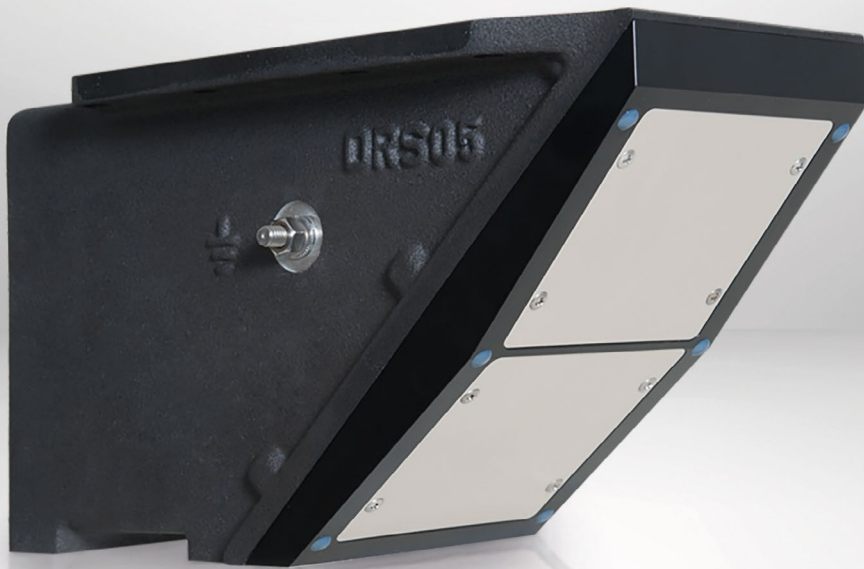




Table of contents

DEUTA Sensors	5
Product Overview	6
DEUTA Radar Sensors	8
DEUTA Pick-up Sensors	10
DEUTA Axle-mounted Sensors	12

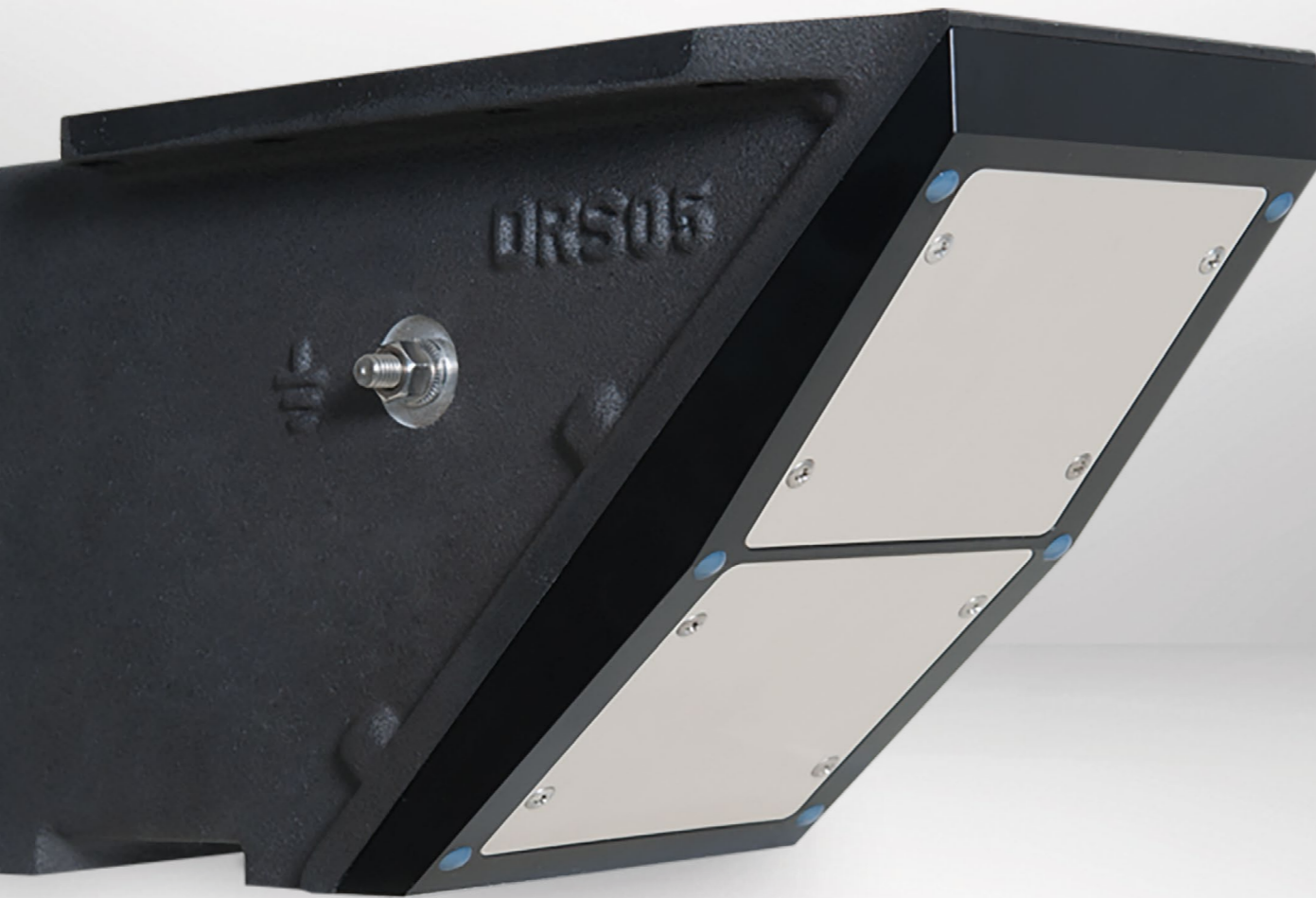
»DEUTA Sensors -

Robustness, self-diagnosis and reliability!«

- **Robustness:** to extreme temperature/wear/impact of stones
- **Contactless:** Doppler radar with innovative evaluation algorithm
- **Self-diagnosis:** Information about operating mode and condition of the sensor
- **Long-lasting:** Low-wear thanks to non-contact measurements
- **Mechanical defined number of pulses per revolution** als captive property of the product

Sensors for your safety!

For an entire system to be safe and precise, quality and robustness, self-diagnosis and reliability of the sensors are the decisive factors. Due to the different forms of output signals, DEUTA sensors transport information reliably and can be integrated and used flexibly in different environments.



Longevity

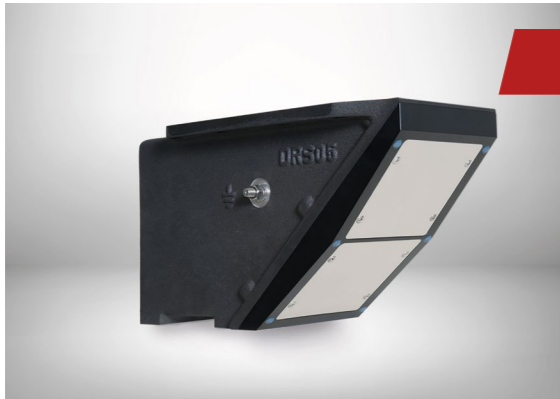
Reliability

Robustness

Self-diagnosis

Quality

Product Overview



Radar sensors

Doppler radar with dual antenna system

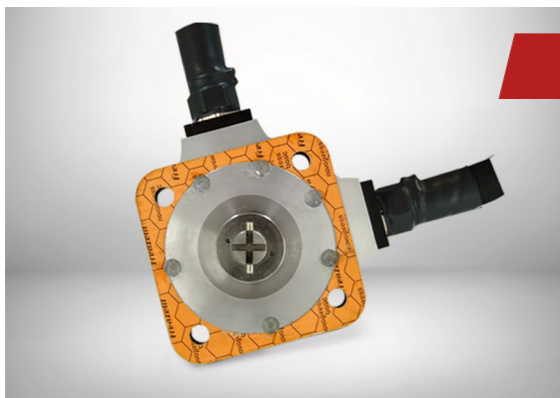
The sensors operate contactless and measure the speed and distance over the ground by deploying the Doppler principle with an dual antenna system. The integrated digital signal processor performs sophisticated evaluation algorithms in the device.



Pick-up sensors

Hall-Sensor

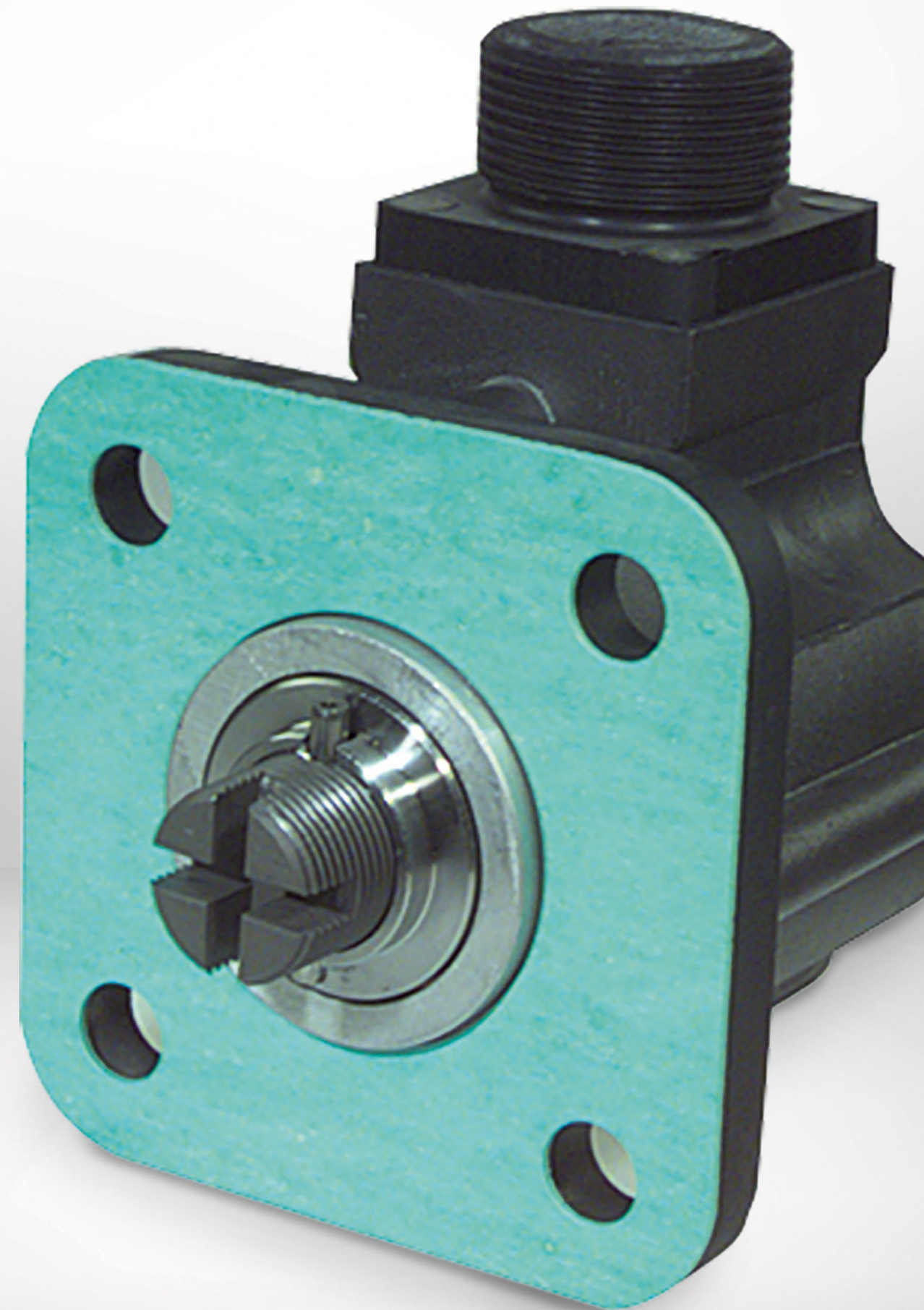
Feature an extremely long service life because the space-saving sensors operate contactless and therefore with low wear.

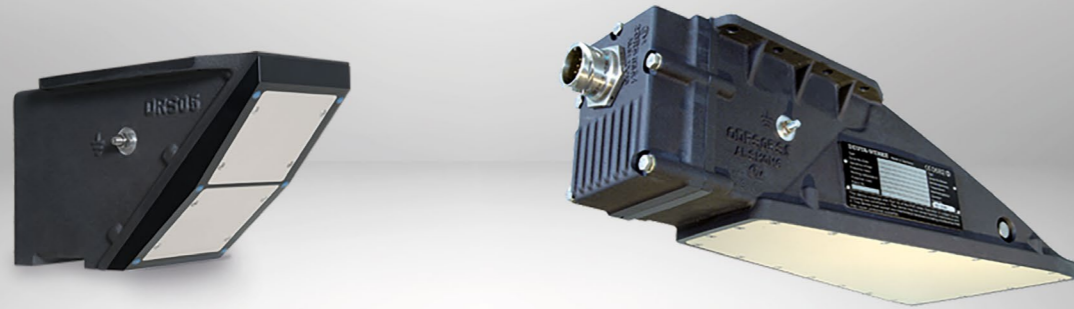


Axle-mounted sensors

1- to 6-channel pulse generator

Insensitive to soiling and vibration, the sensors operate largely maintenance-free and offer different resolutions (pulses per revolution). For all DEUTA axle-mounted sensors the pulses per revolution are mechanically defined and, therefore a captive property of the product. This „memorized“ number of pulses is the solid basis to ensure a reliable measurement.





»DEUTA Radar Sensors -

Speed not affected by slip and slide!«

- DRS05/3S1 with integrated protective cover against impact of stones
- especially suitable for ETCS / ERMTS high-speed trains
- suitable for metro applications

Minimum Life cycle costs (LCC)

The radar sensors operate completely wear-free and provide reliable measured values throughout the entire life cycle because they are not exposed to particular mechanical wear. There is no alternative to the favorable cost-benefit ratio resulting from low requirements of maintenance and repair over the entire life cycle.

Borderless applications

Radar sensors of the type DRS05 can be used world-wide. Declarations of conformity are available for Europe, U.K., Canada, USA, Japan and Australia.

Particularly robust under harsh environmental conditions

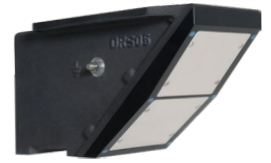
At the DRS05/3S1, an integrated protective prolongs the durability of the radar sensors when they are hit by stone and extends the availability in winter conditions. Such housing is specially recommended for high-speed trains.

Special applications?

Beyond the proven use in the established means of transport the radar sensors can also be adopted to unconventional transport modes like suspension railways or monorail systems. The experienced engineers at DEUTA will be happy to advise you on any issues related to radar sensors, speed detection and connection to your odometry, even at early project stage.

DEUTA Radar Sensors

Feature/Specification	DRS05/3	DRS05/3S1
Working principle	two-channel speed sensor	two-channel speed sensor
Determinable speed range	0.2 km/h up to max. 600 km/h	0.2 km/h up to max. 600 km/h
Measurement noise (1 σ)	<0.4 km/h (v <100 km/h) <0.4 % (v >100 km/h)	<0.4 km/h (v <100 km/h) <0.4 % (v >100 km/h)
Uncertainty due to variation of the underground	<1 % typical	<1 % typical
Path measurement reproducibility (1 σ)	<0.1% typical from 1,000 m distance	<0.1% typical from 1,000 m distance
Power supply	15 to 150 VDC, extended-range power, galvanically isolated, battery potential permitted	15 to 150 VDC, extended-range power, galvanically isolated, battery potential permitted
Power consumption	max. 10 W	max. 10 W
Standard interfaces	1. digital: RS485 2-wire bus, unidirectional, serial 2. digital: pulse output (open collector)	1. digital: RS485 2-wire bus, unidirectional, serial 2. digital: pulse output (open collector)
Forward/Backward recognition	Yes (info output via serial interface)	Yes (info output via serial interface)
Inverse polarity protection/short-circuit-proof	yes/yes	yes/yes
Operating temperature	-40° C to +70° C	-40° C to +70° C
Dimensions	approx. 240 mm x 134 mm x 140 mm (LxWxH) (without plug connector and cable)	approx. 481 mm x 214 mm x 140 mm (LxBxH) (LxWxH) (without plug connector and cable)
Distance to the reflection surface	approx. 200 mm to 1,000 mm, depending on the application	approx. 200 mm to 1,000 mm, depending on the application
Housing material	aluminium cast anodised, cover PEEK	aluminium cast anodised, cover PEEK
Protection class	DRS05/1 IP65, IP67 (with plug and cable) DRS05/2 IP66, IP67, IP69 (with plug and cable) DRS05/3 IP66, IP67, IP69 (with plug and cable)	DRS05/1S1 IP65, IP67, IP69 (with plug and cable) DRS05/3S1 IP66, IP67, IP69 (with plug and cable)
Weight	approx. 2.6 kg (without plug and cable)	approx. 4.7 kg (without plug and cable)



DRS05/1, DRS05/2 & DRS05/3



DRS05/1S1 & DRS05/3S1



»DEUTA Pick-up Sensors - extremely high longevity!«

- almost wear-free due to contactless measuring

DEUTA pick-up sensors

Pick-up sensors from DEUTA have an extraordinary durability, as they operate contact-free and therefore wear-free. The measurement takes place by scanning a gear or magnet wheels, in the process the sensor is mounted in a defined distance over the wheel.

Pulse generator with hall sensor- determines speed and direction of rotation

They use the hall effect to measure the rotational speed. Within the HS 22 two hall elements are geometrically arranged in such a way that even the direction of rotation is identified. The output gauge of both signals receivable separated galvanically from each other is prepared for a wide area of power supply. If recording of the direction of rotation is not necessary, use the one-channel HS21.

DEUTA Pick-up Sensors

Feature/Specification	HS21/22
Working principle	HS22: 2-channel system HS21: 1-channel system
Frequency range	0 to max. 20 kHz, depending on cable length and ext. load
Operating distance, air gap	0.5 to 2.0 mm
Operating temperature	-40° C to +120° C ¹⁾
Storage temperature	-40° C to +85° C
Protection class	IP66, IP67, IP69
Pulse duty factor	50 % ±10 %
Overlap safety	at least 30°
Short-circuit-proof	yes
Reverse polarity protection	yes
Power supply U _B	+5.5 VDC to +30 VDC ²⁾
Insulation voltage	500 V _{EFF} / 50 Hz / 1 min
Power consumption per channel	<20 mA ²⁾
EMC	EN 50155, EN 50121-3-2, EN 61000-6-x
Permitted mechanical load	EN 61373, category 3
Weight	approx. 280 - 340 g ²⁾ with 1 m cable and open cable end
MTBF	>1.800.000 bis 4.600.000 h, ground mobile ²⁾
Indication medium	ferromagnet. gear wheel, module 2 ³⁾ involute toothing acc. DIN 867 - 80 teeth
Gear wheel material	steel, demagnetised St37, St50 or 10-10 DIN EN 10025, grade FE430A

¹⁾ without cable protection or protective tube and plug

²⁾ depending on the output stage and design

³⁾ optimisation to other modules on request



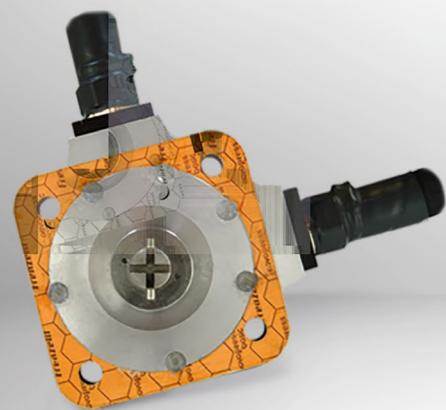
HS21/22...



HS21/22...ca



HS21/22...hc



DF16/1 a, ac
1- to 4-channel pulse generator



EFI61/2 S1 a, ad
AC/pulse generator



EFI50/1 S1 a, d
AC/pulse generator

»DEUTA Axle-mounted Sensors -

The number of pulses per revolution are mechanically defined and therefore a solid basis for reliable measurement!«

- extremely high durability thanks to their predominantly wear-free operation
- insensitivity to dirt and vibration

Proven impulse sensors

Axle-mounted sensors from DEUTA are driven by a mechanical coupling on the axle of the vehicle. Impervious to dirt and vibration, they are virtually maintenance-free and achieve high resolution even at low rotational speeds.

The traditional AC generator generates a voltage and frequency that is proportional to the rotational speed, which can be fed directly to a converter or indicator via a cable, without the need for an additional power supply.

Impulse sensors in different variants

The electronic pulse generators (incremental encoders) are based on a variety of principles, for example optical barrier photocells or hall sensors

All axle-mounted sensors can be supplied as multi-channel units. They can be customised to a certain extent with regard to the number of pulses, the phase relationships, and the output circuits.

DEUTA Axle-mounted Sensors

Feature/Specification	DF16/1 a, ac, ad, af, nf	DF17/1 a, ac, ad, b
Working principle	1- to 6-channel pulse generator	1- to 4-channel pulse generator
Speed range	0 to 2,000 min ⁻¹	0 to 2,000 min ⁻¹
Pulse per revolution per channel	1 to max. 230	1 to max.140
Operating temperature	-40° C to +70° C	-40° C to +70° C
Storage temperature	-40° C to +70° C	-40° C to +70° C
Protection class	IP66, IP67 housing, IP54 drive side	IP66, IP67 housing, IP54 drive side
Pulse duty factor	50% ±20%	50% ±20%
Short-circuit-proof	at least 18°	at least 18°
Short-circuit-proof	yes	yes
Reverse polarity protection	yes	yes
Power supply UB	10 VDC to 30 VDC ¹⁾	10 VDC to 30 VDC ¹⁾
Insulation channel/housing	<1500 V _{EFF} / 50 Hz / 1 min	1500 V _{EFF} / 50 Hz / 1 min
Power consumption per channel	<35 mA	<35 mA
EMC	EN 50155, EN 50121-3-2, EN 61000-6-x	EN 50155, EN 50121-3-2, EN 61000-6-x
Permitted mechanical load	EN 61373, category 3	EN 61373, category 3
Weight without plug and drive	approx. 2.3 kg	approx. 1.7 kg
MTBF	>148,000 to 335,000 h ¹⁾ , ground mobile	>205,000 to 335,000 h ¹⁾ , ground mobile
Design drive	a: cross slot ac: fork drive ad: tongue 20 x 7 af: drive disk nf: flat shaft	a: cross slot ac: fork drive ad: tongue 20 x 7 b: tongue 14 x 5

¹⁾depending on the output stage and design



DF16/1 a, ac, ad, af, nf



DF17/1 a, ac, ad, b

»DEUTA Axle-mounted Sensors -

The number of pulses per revolution are mechanically defined
and therefore a solid basis for reliable measurement!«

DEUTA Axle-mounted Sensors

Feature/Specification	EFI67/1.20.16 a, ac, ad	EFI67/1.50.16 a, b, ac, ad, ae
Working principle	AC/pulse generator	AC/pulse generator
Polarity number	16	16
Voltage at 1,000 min ⁻¹	20 V ±1 %	50 V ±1 %
Frequency at 1,000 min ⁻¹	133.3 Hz	133.3 Hz
Distortion factor at 1,000 min ⁻¹	approx. 10 %	approx. 10 %
Resistance of the coil	approx. 6 Ω	approx. 15 Ω
Rotational speed max.	5.000 min ⁻¹	3.000 min ⁻¹
Impulse transmission	1:1 to 256:1 ¹⁾	1:1 bis 256:1 ¹⁾
Load pulse component	15 VA induction-free max. 250 VAC ²⁾	15 VA induction-free max. 250 VAC ²⁾
Pulse number	max. 20 Hz = 1.200 pulses/min	max. 20 Hz = 1.200 pulses/min
Test voltage	2 kV	2 kV
Protection class housing	IP65	IP65
Protection class drive side	IP64	IP64
Temperature range	-40° C to +80° C	-40° C to +80° C
Weight	approx. 1.85 kg	approx. 1.85 kg
Design drive	a: cross slot ac: fork drive ad: tongue 20 x 7	a: cross slot b: tongue 14 x 5 ac: fork drive ad: tongue 20 x 7 ae: elastic driver / flexible attachment



EFI67/1.20.16 a, ac, ad



EFI67/1.50.16 a, b, ac, ad, ae

DEUTA Axle-mounted Sensors

Feature/Specification	EFI67/1.20.16 a, ac, ad	EFI67/1.50.16 a, b, ac, ad, ae
Polarity number	16	16
Voltage at 1,000 min ⁻¹	20 V ±1%	50 V ±1%
Frequency at 1,000 min ⁻¹	133.3 Hz	133.3 Hz
Distortion factor at 1,000 min ⁻¹	approx. 10 %	approx. 10 %
Resistance of the coil	approx. 6 Ω	ca. 15 Ω
Rotational speed max.	5.000 min ⁻¹	3.000 min ⁻¹
Operating temperature	-40° C to +80° C	-40° C to +80° C
Protection class housing	IP65	IP65
Protection class drive side	IP54	IP54
Weight without drive	approx. 1.6 kg	approx. 1.6 kg
Design drive	a: cross slot b: switch 14 x 5 (length as per specification) ad: tongue 20 x 7 ae: elastic driver/ flexible attachment	a: cross slot b: switch 14 x 5 (length as per specification) ac: fork drive ad: tongue 20 x 7 ae: elastic driver/ flexible attachment



EF67/2.20.16 a,b



EF67/2.20.16 ad, ae



EF67/2.50.16 a,b,ac



EF67/2.50.16 ad, ae

DEUTA Axle-mounted Sensors

Feature/Specification	EFI61/2S1 a,ad	EFI50/1S1 a,d
Working principle	pulse generator	8-pin
Voltage at 1,000 min ⁻¹	80V ± 0.5% per phase	24 V ±10%
Rotational speed max.	max. 2.000 min ⁻¹	max. 3.500 min ⁻¹
Protection class housing	IP65	IP65
Protection class drive side	IP54	IP54
Temperature range	-30° C to +90° C	-40° C to +80° C
Weight	approx. 4.7 kg	approx. 1.6 kg
Design drive	a: cross slot ad: tongue 20 x 7	a: cross slot d: tongue 20 x 7



EFI61/2S1 a,ad



EFI50/1S1 a,d

DEUTA-WERKE

Paffrather Straße 140 | 51465 Bergisch Gladbach | Germany
Phone +49 (0) 2202 958-100 | Fax +49 (0) 22 02 958-145
support@deuta.de | www.deuta.com | www.icontrust.com



DEUTA-WERKE GmbH | Paffrather Str. 140 | 51465 Bergisch Gladbach | Germany | Phone +49 (0) 2202 958-100 | Fax +49 (0) 22 02 958-145 | E-Mail: support@deuta.de | www.deuta.com
Represented by the Managing Directors: Mr. Dr. Rudolf Ganz and Mr. Thomas Blau | Register court: Amtsgericht Köln, Register number: HRB Köln 67 107 | Value added tax identification number: DE 265417448 | Pictures and articles including any other contents printed in the brochure are proprietary. The reprint, copy, distribution as well as any other actions violating the copyright are subject to prior written authorization by DEUTA-WERKE GmbH.

The information contained in this brochure are of general information purposes only representing examples of our standard products. The information contained in the brochure does not constitute any guarantee for technical data or features. DEUTA-WERKE GmbH checked the information carefully, however, it assumes no liability for the timeliness, correctness and completeness or quality of the provided information. Required special features are subject to separate individual agreement on the purchase of a product. Only variations of the pictured standard products agreed on the purchase are decisive.

The state of products pictured and described in this brochure corresponds with that on the final editing, however, DEUTA-WERKE GmbH reserves the right to make changes in the meantime. The names DEUTA REDBOX®, IconTrust®, SelectTrust®, SignalTrust®, MouseTrust®, D-SmartView®, D-EcoView®, D-PowerView® and DEUTA RedCloud® are registered trademarks of DEUTA-WERKE GmbH. IconTrust® and SelectTrust® are patented inventions owned by DEUTA-WERKE GmbH. Without prior written consent of DEUTA-WERKE GmbH the use of trademarks and patents is not allowed.